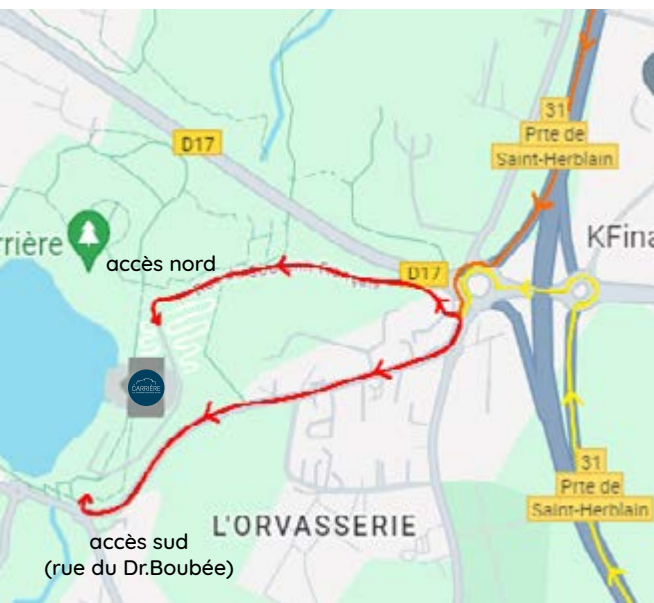


# CONCERT

La Carrière is composed of 4 spaces :

- **La Grande Halle** : Concert hall with 1800 standing places, **960 m<sup>2</sup>**
- **La Verrière** : **216 m<sup>2</sup>** reception hall and bar
- **Le Carreau** : Catering area of **190 m<sup>2</sup>** and 150 table seating
- **Le Rocher** : Collective dressing room and production area of **130 m<sup>2</sup>**

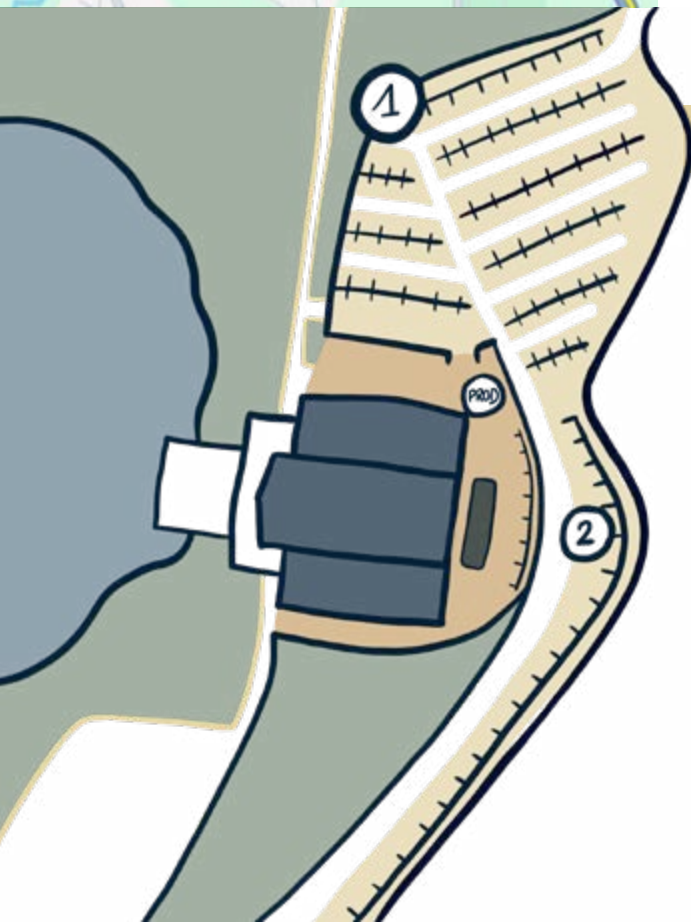


## ACCESS

**2 Bis Rue du Souvenir Français  
44800 Saint-Herblain**

Ring road : Exit 31  
Exit "Saint Herblain"

**GPS Coordinates :**  
Latitude : 47.2176  
Longitude : -1.6484  
Altitude : 43 meters



## CAR PARK

**PUBLIC**

**Car park 1 : 350 spaces**

**Car park 2 : 100 spaces**  
Access by Dr.Boubée street  
Or by "Guinguette Les Nantais"

**PRODUCTION**

Unenclosed parking area  
**1 Tour bus + Trailer**

**WARNING**

Don't park within 4 meters around the building  
to leave the fire lane access free.

# CONCERT HALL

## CONCERT HALL - LA GRANDE HALLE

With reception hall, bar and dressing rooms



**Area :** 960 m<sup>2</sup>

**Capacity :**

Standing = 1800 people

Full bed of chairs = 800 people

## THE STAGE

### Modular stage type « STACCO »

- Standard stage: 160 m<sup>2</sup> 16.80m X 9.60m
- Maximum surface area : 180 m<sup>2</sup> 18,30m X 10.90m.
- Variable height between 1.30m et 1.50m.
- Load capacity for a 2.44m X 2.44m is 600kg/m<sup>2</sup>
- M1 fire retardant black stage skirt
- 2 access staircases 1m wide
- Railings for courtyard, garden and far side

### Stage Area

- Access to equipment depot (surface 100 m<sup>2</sup>), far from right stage.  
Access door : Height 3,45m. Width 2,60m.
- 3 T500 cranes on 3 500 KG motors. The distribution of suspended loads needs to be validated by La Carrière's technical manager.
- Height under lattice 8.37m
- Maximum height under triangulation 5,70m (Stage at 1.30 m)
- Black curtains at front and back of stage, 8m high.
- Black friezes and pendrilons (static).
- Gangway in the Hall.
- 2 lateral catwalks running the length of the hall, floor height 6.15m.
- Spotlight adjustment with gondola, 1A or 3B.

All set materials must meet M1 fire-rated safety standards.

- 19 crash barriers

\* provided by our service provider

# TECHNICAL EQUIPMENT

## SOUND EQUIPMENT

\* provided by our service provider

### Front control

- 1 SOUNDCRAFT - STAGE RACK VI600 - 64 in, 32 out
- 1 SOUNDCRAFT - VI1 - numerical keypad 32 in, 32 out 1x madi optical card sc/sc
- 1 SOUNDCRAFT/STUDER - RS2426 - madi multi mode optical card sc
- 1 FIBRE - FIBERFOX BOX - MM - Multi Mode Optical Fibre HMA to SC
- 1 FIBRE - FIBERFOX DUAL - MM - 150 - 2x Multi Mode Optical Fibre Dual SmartBeam HMA en touret 150m

### Front diffusion

- 6 L-ACOUSTICS - KS28 - Woofer Dual 18"
- 18 L-ACOUSTICS - KARA II - 2 way speaker WST - Dual 8" - Active
- 2 L-ACOUSTICS - Kit Kara BUMP For one Cluster
  - 2 L-ACOUSTICS - M-BAR - for Systeme Kara
  - 2 L-ACOUSTICS - M-BUMP - for Systeme Kara
  - 4 SHACKLES LYRE 3T1/4
  - 2 Sheathed lifting slings d:10mm 1T Length =0,5m
- 2 SIGMA - PROSIGHT 2 - Inclinomètre Digital & Laser (volant)
- 1 SIGMA - PROSIGHT 2 - Remote control for Inclinomètre Laser
- 2 L-ACOUSTICS | LA-RAK-II | Amplification rack of 3 LA12X
  - 6 L-ACOUSTICS - LA12X - Digital process amplifier
- 4 K&M - Speaker Stand - Aluminium speaker stand, maxi load 30 Kg.
- 1 L-ACOUSTICS - LA12X - Digital process amplifier
- 2 Sheathed lifting slings d:10mm 1T Length =0,5m
- 6 SHACKLES LYRE 3T1/4

### First row diffusion

- 4 L ACOUSTICS - X12 - Coaxial speaker 12
- 4 L ACOUSTICS - X8 - Passive coaxial speaker 2 voies

### Rack control

- 1 DriveRack S - L-Acoustics
  - 1 L-ACOUSTICS - P1 - Audio processor and microphone interface/Line AES/ EBU et AVB
  - 1 L-ACOUSTICS - LS10 - Switch AVB 10 ports
  - 1 APPLE - MAC BOOK PRO 15" 2,66 G H z i7 - Memory 8 Go 1067 MHz DD R3 Graphics card intel hd graphics 288 Mo
  - 1 BEHRINGER - ECM8000 - Omni Static Measure microphone
- 1 MULTI - KIT multi FOH 100 m - Multiple Facade 1 VDM121/4 RJB/1 32A M
  - 1 VEAM12 - MV12100 - Multipair VDM 12 pairs 100m separate ground
  - 4 RJ45 ETHERCON | RJETH100 | Network cables 100 m - Cat5e
  - 1 P1732M - 100- Prolongateur 32A Mono 3G6mm<sup>2</sup> P17>P17 100m
  - 1 SIGMA Flight Case - Big trunk with grey cables - 45" STD - 22U - 1/4

## Multipairs

- 2 PYLE32 - EPF32M - Eclate Pyle femelle 32 paires / XLR male
- 2 PYLE32 - MP3209 - Multipair Pyle 32 paires 9 m
- 1 PYLE32 - BP32/3 - Pyle Box 32 In > 3 Out c/w 4 Lemo 8 pairs

## Power supply

- 1 AR63 - SEC63- FLY - Cabinet 63A T> 1xP17 63M+3xP17 32T+6xP17 32M+2xP17 16T
- 2 BO32M C - BARQUETTE - Casing 32A M > 1xP17 32M + 3x2PC16

## Monitor control

- 1 SOUNDCRAFT - VI1 - digital console 32 in, 32 out 1x Madi optical card sc/sc

## Monitor playback

- 2 NEXO - NXAMP 4X4 MK1 - controller amplifie 4 x 4000w
- 8 NEXO - P15 - Speaker 2 voies Active/Passive - LF 15» HF 3»
- 1 FLIGHT CASE - NEXO - NXAMP x 2 (14U)

## Microphones

- 10 Kit Microphones Silver
- 5 K&M - 25960 - Small black microphone stand with round base + boom
- 5 K&M - 210/9 - Big black microphone stand + boom

# LIGHTING

\*provided by La Carrière

- 1 MQ100 Chamsys console
- 1 Colorsource ETC 20 AV console
- 3 RVE 12x3kw dimmer racks
- 1 Digitour Juliat 3x5kw dimmer rack
- 78 dimmer channels x 3kw + 3x5kw.
- 6 Alpha Wash 700 Clay Paky
- 6 Viper - Performance Martin
- 6 WildSun 500 Ayrton
- 10 Sunstrips Showtec
- 14 PAR on Chauvet battery
- 8 PC Juliat 2kw projectors (clear lenses)
- 30 PC Juliat 1kw projectors (clear lenses)
- 30 PAR 64 + 4 bars of 6 PAR 64.
- 10 cyclodes 1kw.
- 4 cut-outs 714 SX Juliat 15/38° 2kw.
- 4 cut-outs 614 SX Juliat 15/38° 1kw.
- 2 cut-outs 613 SX Juliat
- 6 Blinder 2 lamps

## Fog machine

\* provided by our service provider

- 1 MDG - Atmosphere ATMe / CO2 - Mist Generator DMX
- 1 CO2 Pour MDG - Carbon dioxide M14 - REF : I5100M14R0A001

# VIDEO EQUIPMENT

- 1 VP PANASONIC – Laser DLP 12 000 lm
- 1 fixed screen (Polichinelle) in La Grande Halle L :8m H : 7m

# STAFF

## SOUND \* provided by our service provider

### Preparation

- 2 sound prep

### Show

- 1 hour HGV driving (30m<sup>3</sup> forwarder)
- 1 return sound technician
- 1 system technician

## LIGHT \*provided by La Carrière

- 1 console operator + 3 Roads

# ELECTRICAL POWER

## On each of the two side walkways :

- 4 x 32A Tri + N + T hypra
- 2 x 63A Tri + N + T hypra
- 1 x 125A Tri + N + T hypra

## For sound, power supply Stage right :

- 1 x 63A Tri + N + T hypra

## For the light, power supply Stage left:

- 1x 400A cosse SIMEL - T N P1 P2 P3

## Outside of the building :

- 2 points 125A Tri + N + T hypra – Light (1 in front and 1 behind the building)
- 2 points 32A Tri + N + T hypra – Sound (1 in front and 1 behind the building)





## DRESSING ROOMS

### Dressing room :

- 2 dressing rooms (2 x 6 people) with fridges, mirrors and showers.
- 1 collective dressing room in salle Rocher

### Catering office :

- 4-plate electric cooker
- 250° steam and convection oven
- 4 stainless steel worktops
- Cold room 2 doors + ladders
- 1 negative fridge 1 door
- 1 positive fridge 3 doors
- 4 X 16 A oven sockets
- 4 X 20A three-phase sockets
- Dishwashing room :  
1 hood wash and 1 front wash
- Personnel checkroom: washroom with shower
- 2 outdoor 16A PCs
- Heavy-duty vehicle access to equipment depot



## CONTACTS

Phone number : 02.40.76.01.11

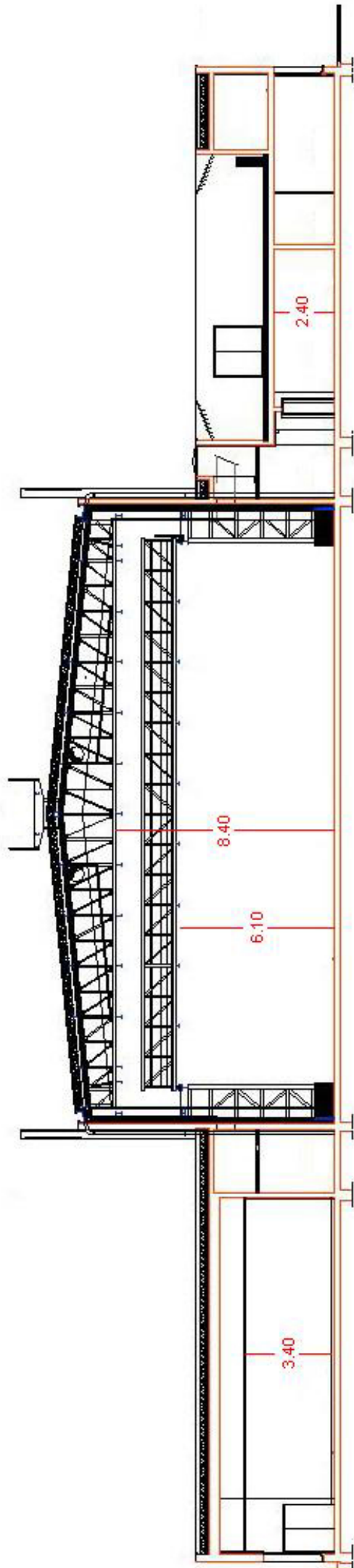
CEO : Antoine LENEVEU  
antoine.leneveu@lacarriere-events.com  
+33 6 58 84 54 38

Technical Manager : Cédric TOUCHARD  
cedric.touchard@lacarriere-events.com  
+33 7 61 32 38 58

Production Manager : Bertille PALLAC  
bertille.pallac@lacarriere-events.com  
+33 6 22 00 04 54







COUPE B