

EVENTS

La Carrière is composed of 4 spaces :

- **La Grande Halle** : 960 m² hall (conferences, dinners, shows, exhibitions .)
- **La Verrière** : 216 m² reception hall (bar, buffet, registration, checkroom, afterwork)
- **Le Carreau** : 190 m² room (seminars, meeting, workshops, sub-committees)
- **Le Rocher** : 130 m² room (workshops, sub-committees, cocktail area)



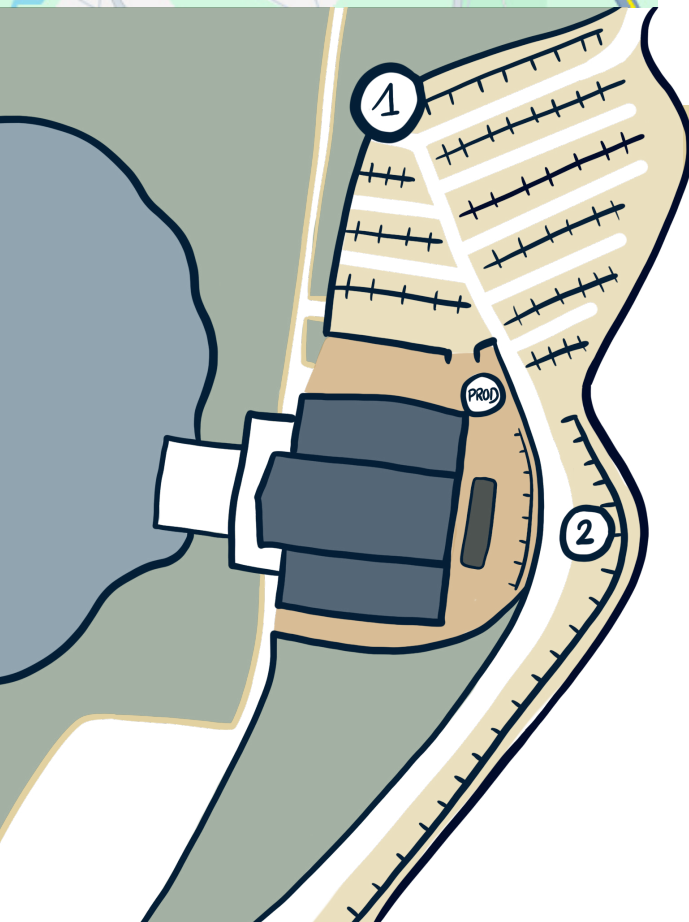
ACCESS

2 Bis Rue du Souvenir Français
44800 Saint-Herblain

Ring road : Exit 31
Gate "Saint Herblain"

GPS Coordinates :

Latitude : 47.2176
Longitude : -1.6484
Altitude : 43 meters



PARKING

PUBLIC

Parking 1 : 350 spaces

Parking 2 : 100 spaces

Access by Dr.Boubée street
Or by "Guinguette Les Nantais"

ORGANISATION

Unenclosed parking area

WARNING

Don't park within 4 meters around the building
to leave an access for the fireman

4 FLEXIBLE SPACES

LA GRANDE HALLE



SURFACE

960m²

CAPACITY*

800 : sitting
1800 : standing
600 : dining

LA VERRIÈRE



SURFACE

216m²

CAPACITY*

130 : sitting
200 : standing
100 : dining

LE CARREAU



SUPERFACE

190m²

CAPACITY*

180 : sitting
200 : standing
120 : dining

LE ROCHER



SURFACE

130m²

*divisible into 2 rooms of 65m² with black curtains

CAPACITY*

120 : sitting
150 : standing
80 : dining

*capacity can be adjusted to suit room and stage layout



THE STAGE

Flexible stage type « STACCO »

- Standard stage: 160 m² 16.80m X 9.60m
- Maximum surface area : 180 m² 18,30m X 10.90m.
- Variable height between 1.30m et 1.50m.
- Load capacity for a 2.44m X 2.44m is 600kg/m²
- M1 fire retardant black stage skirt
- 2 access staircases 1m wide
- Railings for courtyard, garden and far side

Stage area

- Access to equipment depot (surface 100 m²), far from right stage.
Access door : Height 3,45m. Width 2,60m.
 - 3 T500 cranes on 3 500 KG motors. The distribution of suspended loads needs to be validated by La Carrière's technical manager.
 - Height under lattice 8.37m
 - Maximum height under triangulation 5,70m (Stage at 1.30 m)
 - Black curtains at front and back of stage, 8m high.
 - Black friezes and pendrilons (static).
 - Gangway in the Hall.
 - 2 lateral catwalks running the length of the hall, floor height 6.15m.
 - S potlight adjustment with gondola, 1A or 3B.
- All set materials must meet M1 fire-rated safety standards.

TECHNICAL FACILITIES

SOUND EQUIPEMENT

- 2 Nexo PS8 speakers
- 4 Nexo PS10 speakers
- 2 Nexo PS15R2 front speakers
- 2 crank speaker stands
- 2 Nexo Nxamp 4X2 MK2 amps
- 2 Sub Nexo LS 600
- 1 Yamaha O1Vi digital console
- 1 SQ5 Allen & Heath digital console
- Public Address sound system in all rooms
- DI : 4X BBS AR 133

Microphones

Wireless :

- 5 x XSW 2 835 A Sennheiser (hand)
- 1 x W300 Sennheiser (hand)
- 1 x DPA (headset)

Wired :

- 1 SM58 / 1 PG48

LIGHTING

- 1 MQ100 Chamsys console
- 1 Colorsource ETC 20 AV console
- 3 RVE 12x3kw dimmer racks
- 1 Digitour Juliat 3x5kw dimmer rack
- 78 dimmer channels x 3kw + 3x5kw.
- 6 Alpha Wash 700 Clay Paky
- 6 Viper – Performance Martin
- 6 WildSun 500 Ayrton
- 10 Sunstrips Showtec
- 14 PAR on Chauvet battery
- 8 PC Juliat 2kw projectors
- (clear lenses)
- 30 PC Juliat 1kw projectors (clear lenses)
- 30 PAR 64 + 4 bars of 6 PAR 64.
- 10 cyclodes 1kw.
- 4 cut-outs 714 SX Juliat 15/38° 2kw.
- 4 cut-outs 614 SX Juliat 15/38° 1kw.
- 2 cut-outs 613 SX Juliat
- 6 Blinder 2 lamps

VIDEO EQUIPMENT

- 1 VP PANASONIC – Laser DLP 12 000 lm (Grande Halle)
- 2 VP PANASONIC PT-LW3353100 lm (1 VP static in Carreau + 1 mobile VP)
- 1 fixed screen (Polichinelle) in La Grande Halle L :8m H : 7m
- 1 fixed screen in Le Carreau L:3m H:2m
- 1 ROLAND V8-HD mixer
- 1 32-inch return screen

ELECTRICAL POWER

On each of the two side walkways :

- 4 x 32A Tri + N + T hypra
- 2 x 63A Tri + N + T hypra
- 1 x 125A Tri + N + T hypra

For sound, power supply Stage right :

- 1 x 63A Tri + N + T hypra

For the light, power supply Stage left:

- 1x 400A cosse SIMEL - T N P1 P2 P3

Outside of the building :

- 2 points 125A Tri + N + T hypra – Lumière (1 in front and 1 behind the building)
- 2 points 32A Tri + N + T hypra – Son (1 in front and 1 behind the building)



Internet connection :

- WI-FI All-Access public ADSL et fibre 10GO
- Possibilité de privatisation du réseau internet + de rediriger vers le site internet de votre choix

Dressing room :

- 2 dressing rooms (2 x 6 people) with fridge, mirrors and shower.

Catering office :

- 4-plate electric cooker
- 250° steam and convection oven
- 4 stainless steel worktops
- Cold room 2 doors + ladders
- 1 negative fridge 1 door
- 1 positive fridge 3 doors
- 4 X 16 A oven sockets
- 4 X 20A three-phase sockets
- Dishwashing room :
1 hood wash and 1 front wash
- Personnel checkroom: washroom with shower
- 2 outdoor 16A PCs
- Heavy-duty vehicle access to equipment depot

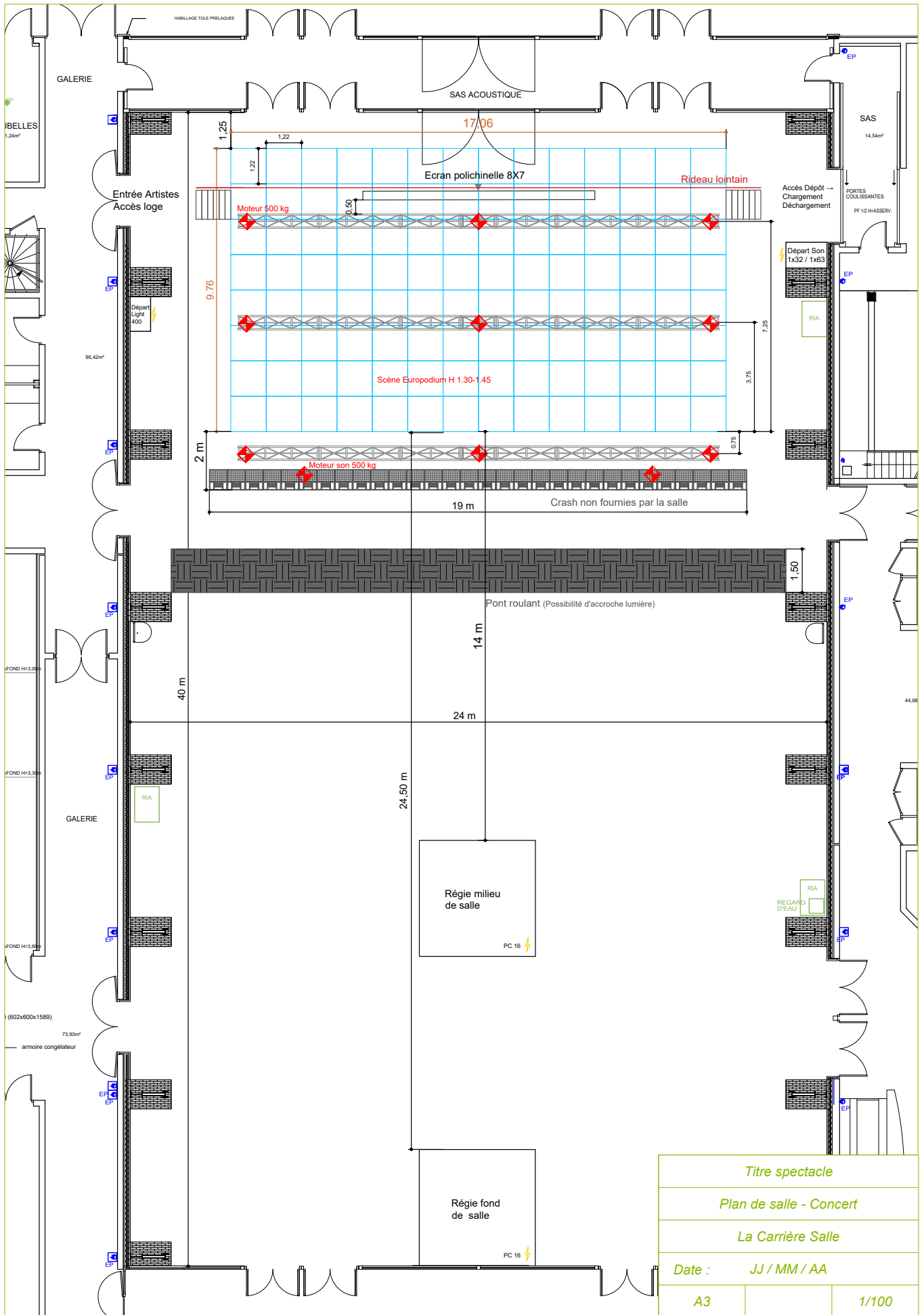
CONTACT

Phone number : 02.40.76.01.11

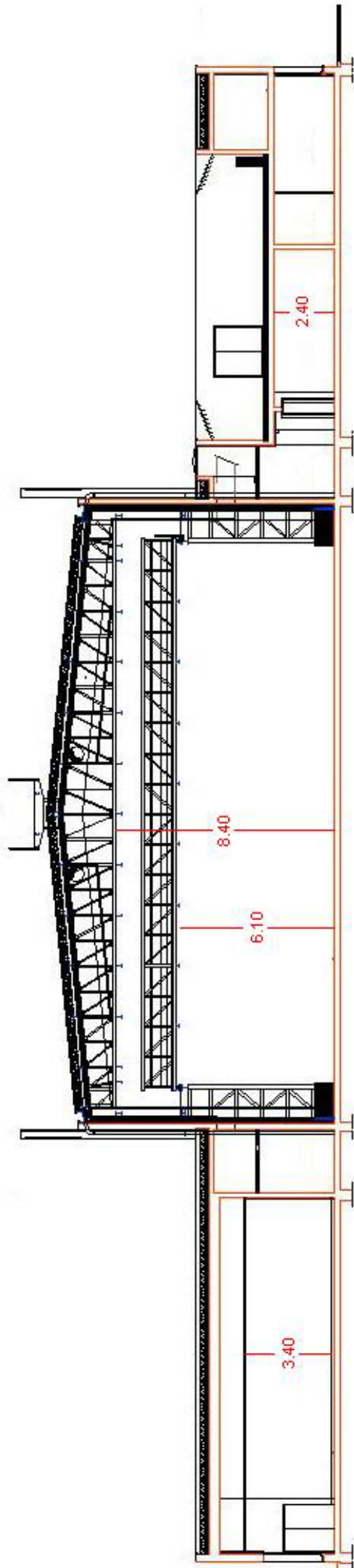
CEO : Antoine LENEVEU
antoine.leneveu@lacarriere-events.com
+33 6 58 84 54 38

Technical director : Cédric TOUCHARD
cedric.touchard@lacarriere-events.com
+33 7 61 32 38 58

Production manager : Bertille PALLAC
bertille.pallac@lacarriere-events.com
+33 6 22 00 04 54



Titre spectacle		
Plan de salle - Concert		
La Carrière Salle		
Date : JJ / MM / AA		
A3		1/100



COUPE B